



Suit ring från Glove
Lock set.

Quick Cuff ring
mounted on suit.

60524 G lock spanner
for Quick Cuff

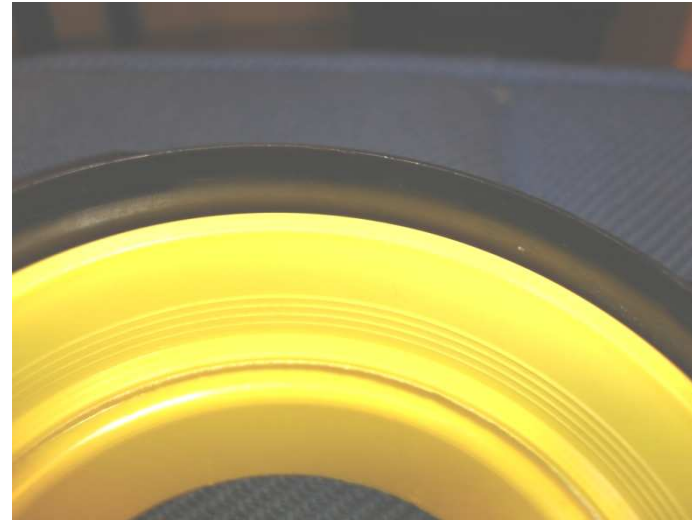
Latex seal from SI TECH



To better clarify the assembly process a yellow quick cuff is used. At assembly a black ring is used.



To mount Quick Cuff PU-ring in suit ring
bend the ring as shown in the picture.



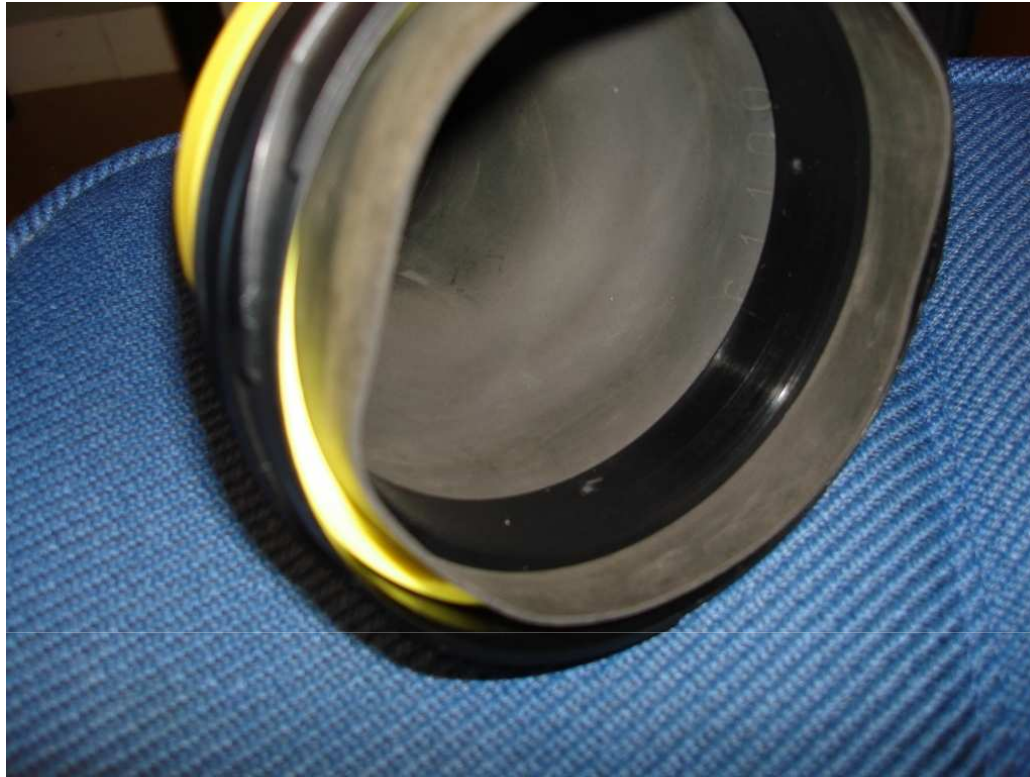
The ridge shall lay directly at inside edge.



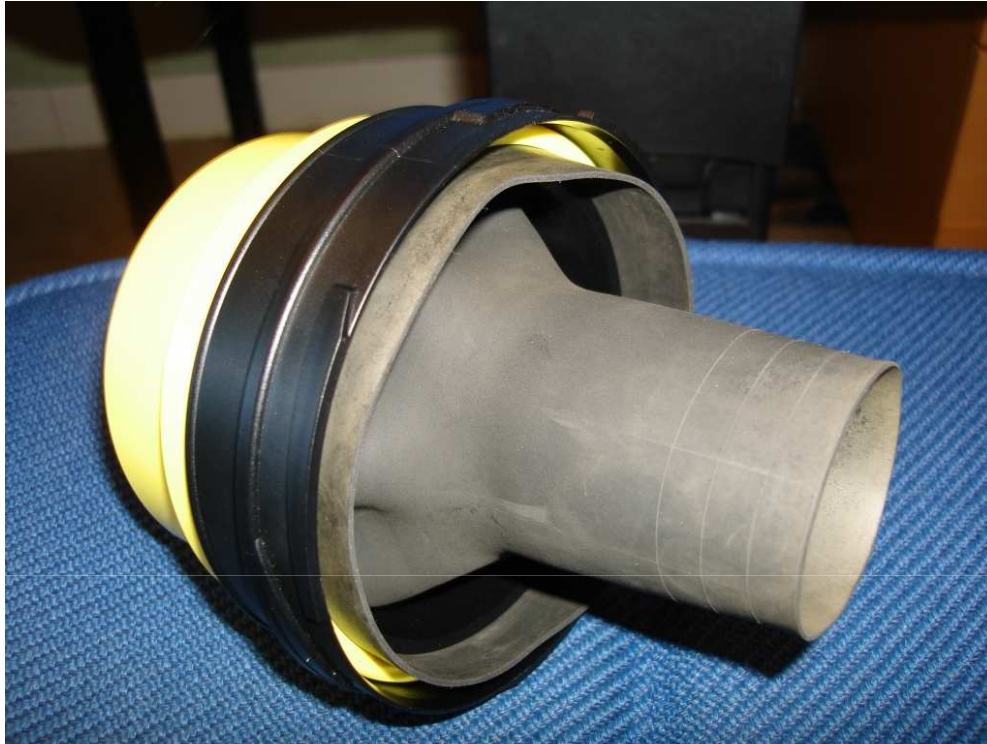
Pull over latex seal of 60524 "G Lock
Spanner ring for quick cuff"



Put latex seals with spanner ring
(60524) in the Quick Cuff pu-ring.



Press the spanner ring, press evenly around the ring.



Control by pulling latex and suit sleeve
in opposite directions.