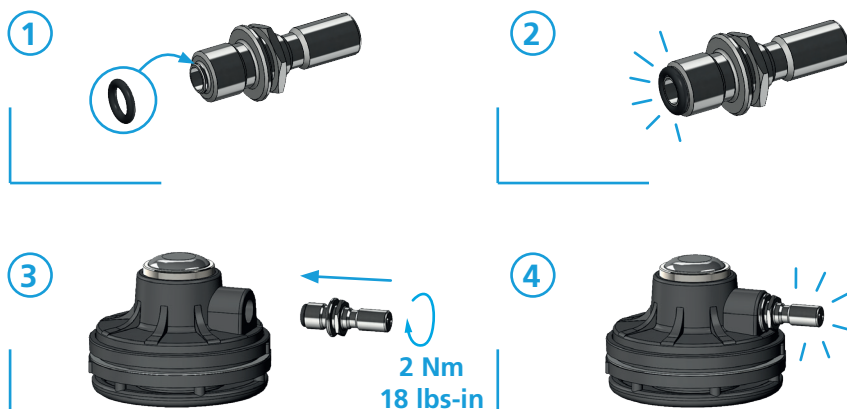


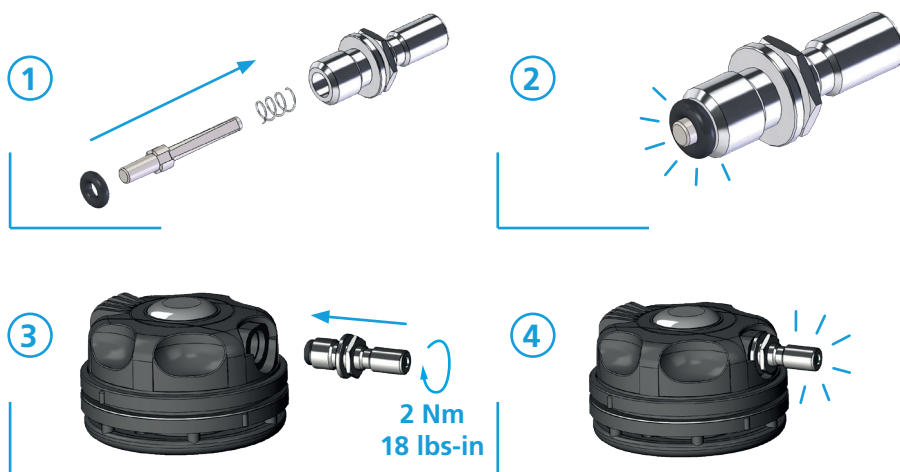
Mounting instruction

20101, 21101, 25206, 25306

(valid for Cejn and Int'l nipples mounted on Skeleton and Shell valves)



25208



Male Quick Connector Nipples

☐ 20101 : Skeleton - Int'l

☐ 21101 : Shell - Int'l

☐ 25208 : Slide - Int'l

☐ 25206 : Shell - Cejn

☐ 25306 : Skeleton - Cejn



This manual cover change of Quick Connector nipples on SI TECH Inflation valves with push button and slide function.

Please note that there are different sets for different valve models.

Important information about service!

Only service technicians trained by SI TECH are allowed to perform service on SI TECH products.

For questions regarding service or service courses please contact SI TECH.

INNOVATIVE SAFETY SOLUTIONS – MADE IN SWEDEN

Skeleton



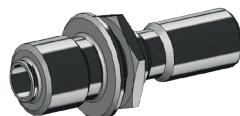
Cejn

Part number:
25306



Int'l

Part number:
20101



Shell



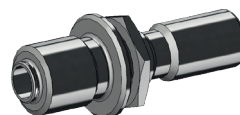
Cejn

Part number:
25206



Int'l

Part number:
21101



Slide

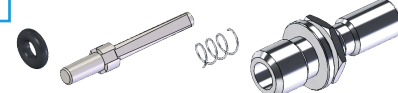


Cejn

The slide valve is only available
with Int'l nipple

Int'l

Part number:
25208



How to identify the different nipples

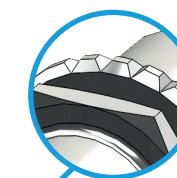
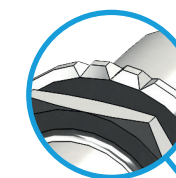
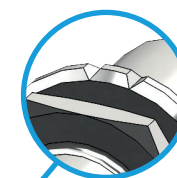
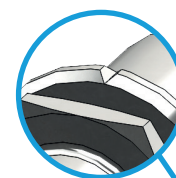
The nipples used for Shell and Skeleton are provided with grooves for ease of identification.

1 groove:
Int'l - Shell
Part no: 21101

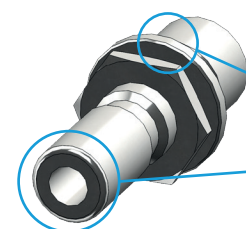
2 grooves:
Int'l - Skeleton
Part no: 20101

3 grooves:
Cejn - Shell
Part no: 25206

4 grooves:
Cejn - Skeleton
Part no: 25306



The nipple used for the Slide valve has no groove.



Int'l - Slide

No groove

One hole

Part no: 25208

! Mounting torque: 2 Nm / 18 lbs-in (valid for all SI TECH Inflation valve models).
Flow and leakage test: 6-10bar / 90-150 PSI (after changing socket).