

Inflation Valve

Swivel the Inflation Valve to place the knob under the nipple.

Place the hole in the tool over the nipple and use the hole edge to push the knob sideways.

Align the knob of the attachment nut into the narrow end of the tool.

Turn the tool and attachment nut;

- clockwise to remove
- counter clockwise to attach



Blanking plug

The attachment tools can also be used for detachment and reattachment of the blanking plug (item no. 60340).

Place the wide end of the tool over the Blanking Plug's knobs.

Align the knob of the attachment nut into the narrow end of the tool.

Turn the tool and attachment nut;

- clockwise to remove
- counter clockwise to attach



Document produced by
Johanna Strömgren
2012-02-27

How to use Attachment tools

18222

Tools are recommended to enhance the grip when detaching and/or reattaching SI TECH valves.

Attachment tools (item no. 18222) can be used for almost all SI TECH Exhaust and Inflation Valves and the Blanking plug (item no. 60340).



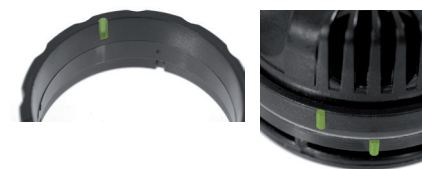
These instructions cover drysuits equipped with SI TECH Valve Ports ensuring a safe and tight fitting according to standard requirement.

Detachment and reattachment

Use the attachment tools when applying torque. Be sure that the valve is settled correctly into the guide groove of the Valve Port.

Do not hold the cover on the valve when mounting or detaching. Never use the cover/lid to tighten the valve.

Match the notches on the attachment tools to the barbs on the valves.



INNOVATIVE SAFETY SOLUTIONS – MADE IN SWEDEN

Ensure that the notches on the attachment tools is properly matched with the barbs. The attachment tool must cover the barbs entirely.



Incorrect



Correct

Do not over tighten the valve! This might cause damage to the drysuit and/or the valve. If you have any doubts, please contact a qualified service technician.

Attachment of valves must be made in a safe and non-destructable way.

Do not mix the Exhaust and Inflation Valve attachment nut when refitting the valves. Note that the Exhaust Valve attachment nut has a filter and the Inflation Valve has no filter.

If the valve is impossible to detach, although using the appropriate tools correctly, contact your dealer.

An Anti-friction washer should always be used, positioned between the suit and the attachment nut.

Silicone or polyurethane compounds can provide a permanent attachment that will obstruct detachment for service of the valve and should therefore be avoided.

Penetration of such sealants into valve threads can actually impair disassembly of the valve for service.



Exhaust Valve

Prior to detachment from the suit and prior to reattachment into the suit Valve Port, make sure that the Exhaust Valve cover is adjusted clockwise to full stop (+).

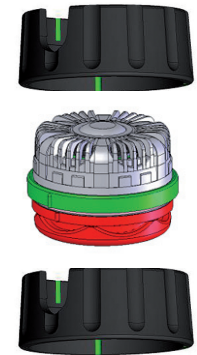


Place the wide end of the tool over the Exhaust Valve's knobs.

Align the knob of the attachment nut into the narrow end of the tool.

Turn the tool and attachment nut;

- clockwise to remove
- counter clockwise to attach



The Exhaust Valve should be installed turned clockwise to its full stop.



Exhaust Valve



Inflation Valve