

SI TECH®

INNOVATIVE SAFETY SOLUTIONS – MADE IN SWEDEN

PIONEERS IN DIVING



www.sitech.se

STIG INSULÄN,
FOUNDER OF SI TECH,
WITH A VISION TO THE FUTURE
YEAR: 1967

Our products have been trusted by divers for more than 40 years

SI TECH through its founder Stig Insulán has always had a strong foothold in the diving around Lysekil, where there is a vast accumulation of wrecks found in the nearby waters. Over the years, many divers have asked Stig Insulán and later SI TECH for assistance with diving on the wrecks in the area. One of the reasons that SI TECH actually ended up in the vicinity of Lysekil area was just Stig's friendship and support to the divers in Tång-Johan's diving society. They discovered the wreck of the ANTARES in 1965 and were the first to dive the wreck that same year. S/S ANTARES was a German cargo ship that was torpedoed and sunk by the British submarine "Sunfish" on April 10, 1940.

With the introduction of the ANTARES Dry Glove System we have decided to name future Dry Glove Systems after shipwrecks in our nearby region!

We will conduct dives on each of these wrecks and make footage and filming available on our facebook area when possible! www.facebook.com/SITECHAB

LOCATION: RACHEN
DEPTH: 75 M
DIVER: ERIK
PHOTOGRAPHER: JONAS DAHM, DEEP SEA PRODUCTIONS

Our products are in use across the entire marine environment



LOCATION: WEST COAST OF SWEDEN
ACTIVITY: CHALLENGING HOSTILE ENVIRONMENTS
PHOTOGRAPHY: SAFE AT SEA AB AND JONAS WALL

Market Presence

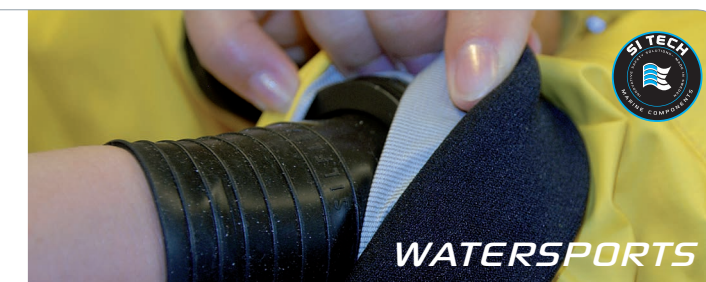
Products targeting diving

- Valves
- Hoses
- Seals
- Modular Quick Change Solutions
- Dry Glove Systems
- Service and Repair kits
- Filling hardware



Products targeting watersports

- Modular Quick Change Solutions
- Neck Tite
- Seals
- Repair kits



Products targeting rescue- and chemical environments

- Valves
- Seals
- Modular Quick Change Solutions
- Service and Repair kits



Products targeting military and law enforcement environments

- Non-magnetic valves
- Non-magnetic hoses and connectors
- Seals
- Modular Quick Change Solutions
- Service and Repair kits





What all started with a need
for greater buoyancy control



...has evolved to become the most
versatile drysuit component
range on the market

Your class is about to begin, four excited students
await your instructions! When all of a sudden your neck seal breaks....

Our **MODULAR QUICK CHANGE SOLUTIONS** will save the day

LOCATION: LYSEKIL
ACTIVITY: REBREATHER CLASS
DIVER: JOHANNA S.
PHOTOGRAPHER: JONAS WALL



WHY MODULARITY?

Superior versatility

Adaptable for every need

Always available

Modular Quick Change Solutions fits to most drysuits. The docking platforms for both neck and wrist solutions are designed to fit close to all common designs and fabrics. The fitting of the docking platforms are quite easy and the benefits gained in comparison with static solutions is undisputed. Some of the premium manufacturers of dry- and rescue suits are currently fitting SI TECH Modular Quick Change Solutions to their core products.



BENEFITS for YOU

- Quickly adapt the suit for whatever dive you have in mind
- Quickly adapt the suit for whatever diver about to use it
- Quickly change a torn or broken seal
- Keep rental suits up to date
- Choose seal of preferred shape
- Choose seal of preferred size
- Choose seal of preferred fabric (silicone or latex)
- Choose seal of preferred colour (silicone seals are available in black or cyan blue)
- Choose from a variety of dry gloves
- No need for time consuming repairs
- Drysuits ready for action at all times

Docking Platforms

You can choose from a variety of docking platforms depending on your primary need. Each of these platforms will provide you with unique opportunities.

Neck Title

- PU-ring glued to drysuit
- Quick change of seals
- Great variety of seals; sizes, models, colours and fabrics (latex and silicone)

QCS Oval

- PU-ring glued to drysuit
- Quick change of seals
- Attach to ANTARES dry glove system
- Great variety of seals; sizes, models, colours and fabrics (latex and silicone)

Quick Cuff

- PU-ring glued to drysuit
- Quick change of seals
- Docking platform for Quick Glove and Glove Lock QCP (dry glove systems)

Heavy Duty Quick Cuff

- Rubber ring glued to drysuit
- Quick change of seals
- Fits a variety of dry gloves
- Great variety of seals; sizes, models, colours and fabrics (latex and silicone)



MADE IN SWEDEN

Modular Components for protective suits

The range of modular components include; Quick Change Solutions and Dry Glove Systems. Both ranges offer unique capabilities and some of the docking platforms fit various systems in the range. All solutions are adoptable for specific needs.



Modular Quick Change Solutions are available for both wrist and neck seals



Outstanding Advantages

Modular Quick Change solutions from SI TECH will save your day in cases of a broken seal. All components are designed to work as part of a comfortable and highly functional system. The accessory range to each system is unique as we design our products for a variety of market segments with highly diversified needs.

Modularity



Fabric & Sizes

Opportunity to choose from latex and silicone seals in a full range of sizes.



Shapes

Opportunity to choose from a great variety of shapes and models.



Colours

Silicone seals are available in black or cyan blue.



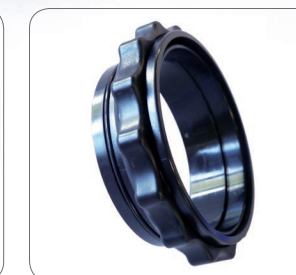
Gloves

A complete line of dry gloves to meet every application.

Heavy Duty Quick Cuff



Quick Glove



Glove Lock QCP



ANTARES





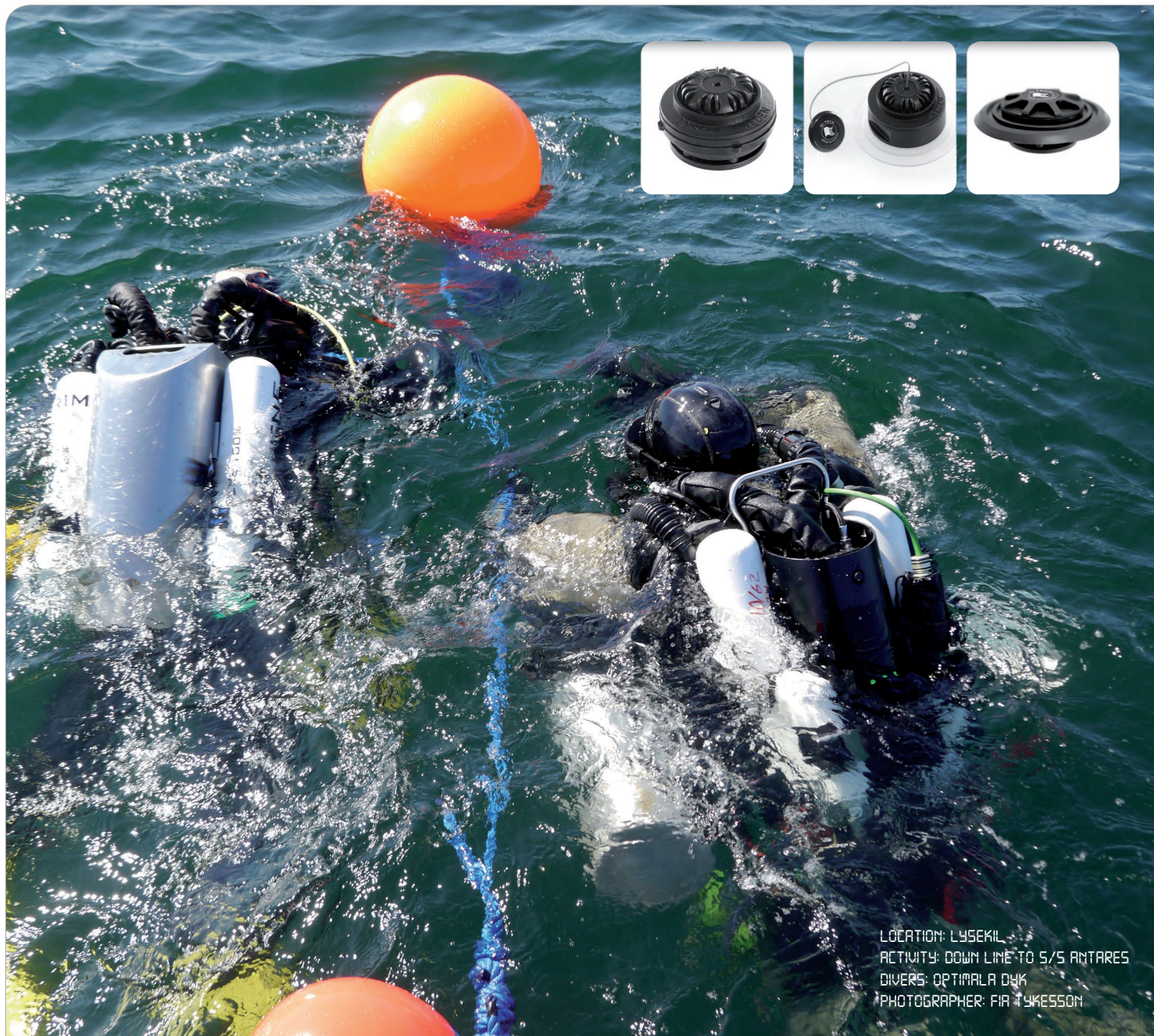
SI TECH Drysuit Valves are developed in accordance with highest standards.

SI TECH Drysuit Valves exceeds the expectations of recreational and technical divers on all levels.

Buoyancy Control Valves



LOCATION: OJAMO LIME MINE
ACTIVITY: PASSING HELLS GATE
DIVER: MIA P.
PHOTOGRAPHER: SAMI PAAKKARINEN



Dump & Pee Valves

SI TECH Dump Valves optimizes safety and comfort. Whether it is a Pee Valve or a basic Cuff Dump, they all have the same great innovation, function and quality as their siblings in the Inflation/Exhaust family.



AT THE DIVE SITE WITH OPTIMALA DYK

ANTARES

This low profile system is easy to use and allows the user to access his equipment without interference.

GLOVES

The ANTARES dry glove system can be fitted with a large variety of gloves. The three finger latex used in this image is perfect for intense wreck diving.

VALVES

Rust and debris often cover our gear when penetrating the wrecks! A SI TECH valve just keeps on functioning.

SEALS

We are diving a lot and seals are breaking, thats a fact! With Modular Quick Change Solutions, that problem just got solved.

LOCATION: KATTEGATT
ACTIVITY: PREPARATIONS
DIVER: JONAS W.
PHOTOGRAPHER: ERIK HAKANSSON



Gas Inflation

SI TECH is manufacturing a wide range of gas inflation components, including: hoses, reducing valves, low mute components special connectors etc. We have supplied NATO forces with special equipment for more than 40 years.

Summary

SI TECH is a Swedish company focusing on development, manufacturing and marketing of innovative safety solutions for protective suits such as; drysuits, rescue suits and similar protective garments. SI TECH is rooted in the diving industry and this is still the company's core market. The company was founded in 1971 by innovative diving pioneer Stig Insulán.

Core products:

Modular Quick Change Solutions, Drysuit Valves, Drysuit seals, Dry Glove Systems, Gas Supply Systems.

Market Segmentation

Marine | Military | Rescue

Development & Production

We take pride in the statement "Made in Sweden"! At SI TECH we are running both development and production in-house at our facilities in Brastad. Inhouse competencies include: CAD construction, Injection Molding, CNC Machining, EMD Machining, Assembly, Sales and Marketing, Logistics and Administration. Our team of engineers, sales and marketing personell is having close co-operation with the distributors and end-users of our products. Our location close to the ocean provides us with fantastic opportunities to test our products in situations ranging from normal to extreme.

Sales & Marketing

Company sales and marketing is operated from company headquarters in Brastad, Sweden. On the international arena SI TECH is guiding a network of distributors.

LOCATION: SI TECH
DEPT. CONSTRUCTION
ACTIVITY: COFFEE BREAK





Innovative Safety Solutions
MADE IN SWEDEN